

# SPYDERCRANE URW376 MINI-CRAWLER CRANE

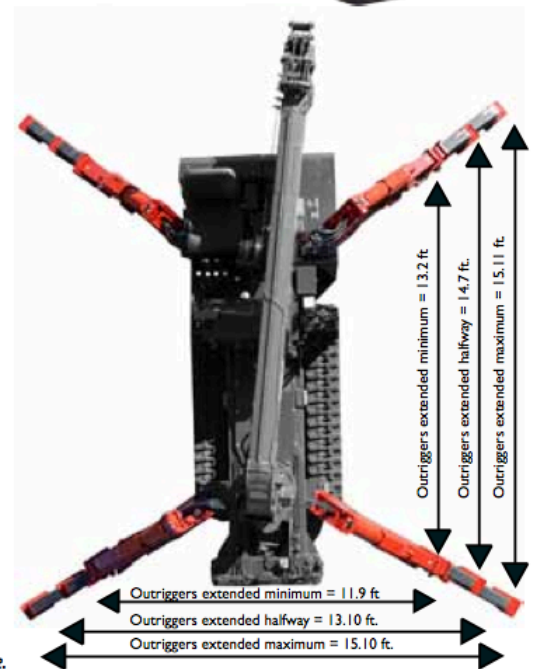
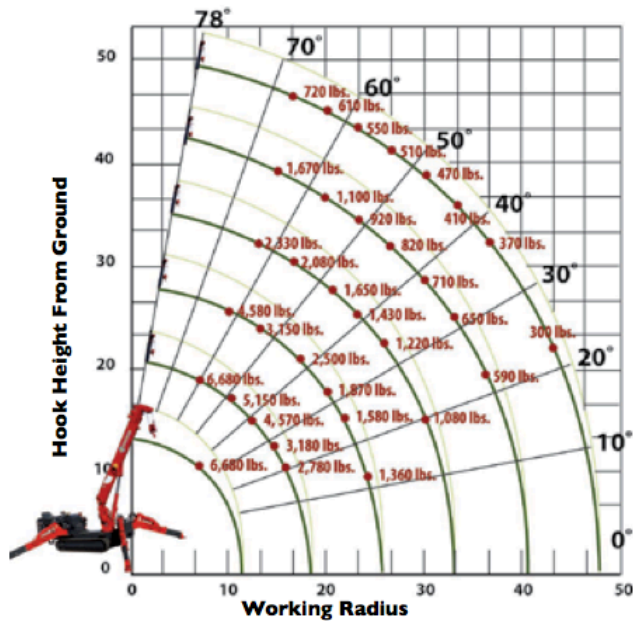
## TECHNICAL SPECIFICATIONS



ASME/B-30.5 Compliant

### DESIGNED TO GO WHERE OTHER CRANES CAN'T

Engineered and manufactured by the Japanese crane industry leader FURUKAWA UNIC Corp., the SPYDERCRANE offers versatility, maneuverability and lifting capacity in a compact design which enables you to quickly, safely and easily meet all of your restricted and confined-area lifting requirements. SPYDERCRANES are distributed in North America by SPYDERCRANE Sales, LLC. of Arizona. Each unit is backed by our 20-plus years of industry and application experience, complete inventory of genuine spare parts and accessories, and superior local service support.



### LOAD CHART *Lifting capacity varies depending on outrigger configuration and boom length and angle.*

ALL BOOMS RETRACTED AND SECOND STAGE EXTENDED											
Working Radius (ft.)	6.5	8.0	10.0	11.0	13.0	15.0	17.0	18.6			
Outriggers Maximum (lbs.)	6,680	6,680	5,150	4,570	3,760	3,180	2,780	2,420			
Outriggers Halfway (lbs.)	6,680	6,680	5,100	4,520	3,600	2,750	2,100	1,760			
Outriggers Minimum (lbs.)	6,680	6,680	4,730	3,700	2,550	2,000	1,500	1,100			
THIRD STAGE EXTENDED											
Working Radius (ft.)	8.5	10.0	11.0	13.0	15.0	16.0	18.0	20.0	23.0	25.8	
Outriggers Maximum (lbs.)	5,000	4,580	3,950	3,150	2,710	2,500	2,160	1,870	1,580	1,360	
Outriggers Halfway (lbs.)	5,000	4,500	3,900	3,150	2,570	2,350	1,870	1,410	1,050	880	
Outriggers Minimum (lbs.)	4,880	4,500	3,800	2,770	2,250	2,000	1,500	1,130	720	480	
FOURTH STAGE EXTENDED											
Working Radius (ft.)	13.0	15.0	16.0	20.0	23.0	26.0	30.0	33.0			
Outriggers Maximum (lbs.)	2,330	2,080	1,960	1,650	1,430	1,220	1,080	900			
Outriggers Halfway (lbs.)	2,330	2,060	1,940	1,500	1,170	910	650	500			
Outriggers Minimum (lbs.)	2,330	1,810	1,540	1,050	740	560	330	260			
FIFTH STAGE EXTENDED											
Working Radius (ft.)	15.0	16.0	20.0	23.0	26.0	30.0	33.0	36.0	40.2		
Outriggers Maximum (lbs.)	1,670	1,480	1,100	920	820	710	650	590	570		
Outriggers Halfway (lbs.)	1,670	1,480	1,070	920	780	650	550	440	350		
Outriggers Minimum (lbs.)	1,670	1,480	910	610	470	340	260	200	80		
SIXTH STAGE EXTENDED											
Working Radius (ft.)	16.0	18.0	20.0	23.0	26.0	30.0	33.0	36.0	39.0	43.0	47.3
Outriggers Maximum (lbs.)	720	660	610	550	510	450	410	370	350	300	280
Outriggers Halfway (lbs.)	720	660	610	550	510	450	410	330	270	190	150
Outriggers Minimum (lbs.)	730	670	620	550	450	290	240	170	130	110	80



# URW376 MINI-CRAWLER CRANE

		URW376C2URS	URW376C2UMRS				
<b>Crane capacity</b>	<b>Capacity:</b>	6,680 lbs. @ 8.20 ft.					
<b>Max working radius</b>	<b>Maximum:</b>	2.03 to 47.40 ft.					
<b>Max lifting height</b>	<b>Approximate:</b>	49 ft.					
<b>Turning radius (ft.)</b>	<b>Minimum:</b>	TURNS WITHIN IT'S DIMENSIONS					
<b>Dimensions (ft.)</b>	<b>Folded: (w x h x l )</b>	4.24 x 5.91 x 14.24					
<b>Weight</b>	<b>Unladen:</b>	8488 lbs.	8760 lbs.				
<b>Outrigger point loading</b>	<b>Maximum:</b>	Specific point landing available upon request					
<b>Winch speed</b>	<b>Approximate:</b>	<b>Single line speed:</b> 223.1 ft./minute at 4th layer <b>Hook Speed:</b> 55.77 ft./min at 4th layer with 4-part line	<b>Diesel</b>				
			<b>Electric</b>				
			<b>Single line speed:</b> 223.1 ft./minute at 4th layer <b>Hook Speed:</b> 55.77 ft./min at 4th layer with 4-part line				
<b>Telescopic system</b>	<b>Boom Length:</b>	11.9 to 47.93 ft.					
	<b>Hydraulic Telescopic with holding valves:</b>	36 ft./23 sec	<table border="1"> <thead> <tr> <th>Diesel</th> <th>Electric</th> </tr> </thead> <tbody> <tr> <td colspan="2">36 ft./23 sec</td> </tr> </tbody> </table>	Diesel	Electric	36 ft./23 sec	
	Diesel	Electric					
36 ft./23 sec							
<b>Boom type:</b>	6- section hydraulicity telescoping boom, hexagonal box construction						
<b>Boom lift speed</b>	<b>Hydraulic with holding valves</b>	0° - 80°/ 10 sec	<b>Diesel</b>				
			<b>Electric</b>				
			0° - 80°/ 10 sec				
<b>Swing rotation</b>	<b>Worm Drive</b>	360 degrees continuous					
<b>Traction System</b>	<b>Travel Speed:</b>	Two Speed	Low: 1.86 mph High: 3.92 mph				
	<b>Gradability:</b>	23°					
	<b>Track ground pressure:</b>	5.22 psi					
<b>Engine / Motor</b>	<b>Manufacturer:</b>	Mitsubishi	Mitsubishi				
	<b>Tank Capacity:</b>	10.57 gal	10.57 gal DNA				
	<b>Maximum output:</b>	24.5 HP	<b>Diesel</b>				
			<b>Electric</b>				
			24.5 HP	10 HP / AC 208-240 V/3 Phase/60HZ			
	<b>Starting method:</b>	Electric start as standard					
<b>Type:</b>	Diesel	Diesel & Electric					
<b>Standard and safety equipment</b>	Full-function radio remote, centrally located infinite variable controls, onboard self-diagnostic computer system, hexagonal boom, anti-two block system, automatic hook stow system, hook safety latch, over-winding prevention device and alarm, working area limitation, minimum wire rope automatic stop, hydraulic circuit pressure relief valve and bubble-style level for outrigger leveling, Rated Capacity Indicator (L.M.I.), Interlock Monitoring Outrigger and Boom System.						

Product specifications are subject to change without notice. No specific training or license is required to operate the SPYDERCRANE in most areas, but operators are responsible for knowing and meeting all local safety requirements and regulations.