

# SPYDERCRANE URW546 MINI-CRAWLER CRANE



## TECHNICAL SPECIFICATIONS

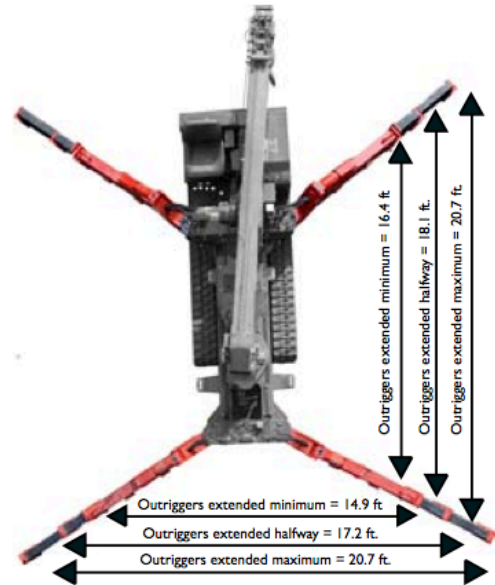
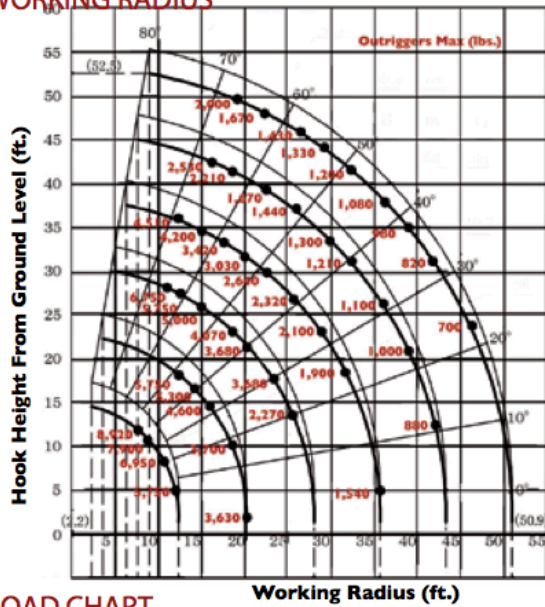
ASME/B-30.5 Compliant

### DESIGNED TO GO WHERE OTHER CRANES CAN'T

Engineered and manufactured by the Japanese crane industry leader FURUKAWA UNIC Corp., the SPYDERCRANE offers versatility, maneuverability and lifting capacity in a compact design which enables you to quickly, safely and easily meet all of your restricted and confined-area lifting requirements. SPYDERCRANES are distributed in North America by SPYDERCRANE Sales, LLC. of Arizona. Each unit is backed by our 20-plus years of industry and application experience, complete inventory of genuine spare parts and accessories, and superior local service support.



### WORKING RADIUS



### LOAD CHART

Lifting capacity varies depending on outrigger configuration and boom length and angle.

ALL BOOMS RETRACTED AND SECOND STAGE EXTENDED											
Working Radius (ft.)	8.0	9.5	11.0	13.0	14.0	16.0	19.0	19.5	20.1		
Outriggers Maximum (lbs.)	8,920	7,900	6,950	5,750	5,300	4,600	3,810	3,700	3,630		
Outriggers Halfway (lbs.)	8,920	7,900	6,950	5,600	5,050	4,300	3,360	3,230	3,100		
Outriggers Minimum (lbs.)	8,920	7,900	6,950	5,430	4,850	3,900	2,700	2,530	2,310		
THIRD STAGE EXTENDED											
Working Radius (ft.)	11.5	13.0	15.0	16.0	18.0	20.0	21.0	23.0	24.0	26.0	27.9
Outriggers Maximum (lbs.)	6,720	5,750	5,000	4,600	4,070	3,680	3,450	3,080	2,850	2,560	2,270
Outriggers Halfway (lbs.)	6,720	5,450	4,620	4,300	3,750	3,090	2,820	2,400	2,100	1,760	1,480
Outriggers Minimum (lbs.)	6,720	5,450	4,400	3,900	3,080	2,450	2,150	1,760	1,550	1,250	1,100
FOURTH STAGE EXTENDED											
Working Radius (ft.)	13.0	14.0	15.0	16.0	18.0	20.0	23.0	26.0	29.0	32.0	35.6
Outriggers Maximum (lbs.)	4,510	4,510	4,200	3,900	3,420	3,030	2,640	2,320	2,100	1,900	1,540
Outriggers Halfway (lbs.)	4,510	4,510	4,000	3,740	3,300	2,900	2,400	1,680	1,460	1,150	970
Outriggers Minimum (lbs.)	4,510	4,510	3,980	3,730	3,090	2,450	1,760	1,240	1,020	820	660
FIFTH STAGE EXTENDED											
Working Radius (ft.)	16.0	18.0	20.0	23.0	26.0	30.0	33.0	36.0	39.0	43.2	
Outriggers Maximum (lbs.)	2,530	2,210	1,980	1,670	1,440	1,300	1,210	1,100	1,000	880	
Outriggers Halfway (lbs.)	2,340	2,140	1,950	1,650	1,430	1,220	1,090	970	780	660	
Outriggers Minimum (lbs.)	2,310	2,090	1,850	1,540	1,230	960	760	660	550	440	
SIXTH STAGE EXTENDED											
Working Radius (ft.)	19.0	23.0	26.0	29.0	33.0	36.0	39.0	43.0	46.0	49.0	50.9
Outriggers Maximum (lbs.)	2,000	1,670	1,430	1,330	1,200	1,080	980	820	700	580	460
Outriggers Halfway (lbs.)	1,210	990	890	790	660	610	550	490	430	400	390
Outriggers Minimum (lbs.)	1,210	990	890	790	660	570	510	430	390	350	130



# URW546 MINI-CRAWLER CRANE

		URW546C IURS	URW546C IUMRS
<b>Crane capacity</b>	<b>Capacity:</b>	8,920 lbs. @ 8.0 ft.	
<b>Max working radius</b>	<b>Maximum:</b>	2.2 to 50.9 ft.	
<b>Max lifting height</b>	<b>Approximate:</b>	52.5 ft.	
<b>Turning radius (ft.)</b>	<b>Minimum:</b>	TURNS WITHIN IT'S DIMENSIONS	
<b>Dimensions (ft.)</b>	<b>Folded: (l x w x h)</b>	16 X 4.52 X 6.67	
<b>Weight</b>	<b>Unladen:</b>	10,825 lbs	11,155 lbs
<b>Outrigger point loading</b>	<b>Maximum:</b>	Specific point landing available upon request	
<b>Winch speed</b>	<b>Approximate:</b>	<b>Single line speed:</b> 144.3 ft./minute at 4th layer <b>Hook Speed:</b> 36.1 ft./min at 4th layer with 4-part line	<b>Diesel</b> <b>Electric</b> <b>Single line speed:</b> 131.2 ft./minute at 4th layer <b>Hook Speed:</b> 32.8 ft./min at 4th layer with 4-part line
<b>Telescopic system</b>	<b>Boom Length:</b>	12.8 to 51.5 ft.	
	<b>Hydraulic Telescopic with holding valves:</b>	38.67 ft./35 sec	<b>Diesel</b> <b>Electric</b> 38.67 ft./35 sec      38.67 ft./48 sec
	<b>Boom type:</b>	6- section hydraulicity telescoping boom, hexagonal box construction	
<b>Boom lift speed</b>	<b>Hydraulic with holding valves</b>	0° to 80°/18 sec	<b>Diesel</b> <b>Electric</b> 0° to 80° /18 sec      0° to 80° /25 sec
<b>Swing rotation</b>	<b>Worm Drive</b>	360 degrees continuous	
<b>Traction System</b>	<b>Travel Speed:</b>	Two Speed	Low: 1.86 mph      High: 3.92 mph
	<b>Gradability:</b>	23°	
	<b>Track ground pressure:</b>	6.54 psi	
<b>Engine / Motor</b>	<b>Manufacturer:</b>	Mitsubishi	
	<b>Fuel Capacity:</b>	10.51 gal	10.51 gal      N/A
	<b>Maximum output:</b>	24 HP	<b>Diesel</b> <b>Electric</b> 24 HP      10 HP
	<b>Starting method:</b>	Electric start as standard	
	<b>Type:</b>	Diesel	Diesel & Electric
<b>Standard and safety equipment</b>	Full-function radio remote, centrally loacted infinite variable controls, onboard self-diagnostic computer system, hexagnol boom, anti-two block system, automatic hook stow system, hook safety latch, over-winding prevention device and alarm, working area limitation minimum wire rope automatic stop, hydraulic circuit pressure relief valve and bubble-stlye level for outrigger leveling, Rated Capacity Indicator, (L.M.I) Interlock Monitoring Outrigger System.		

Product specifications are subject to change without notice. No specific training or license is required to operate the SPYDERCRANE in most areas, but operators are responsible for knowing and meeting all local safety requirements and regulations.